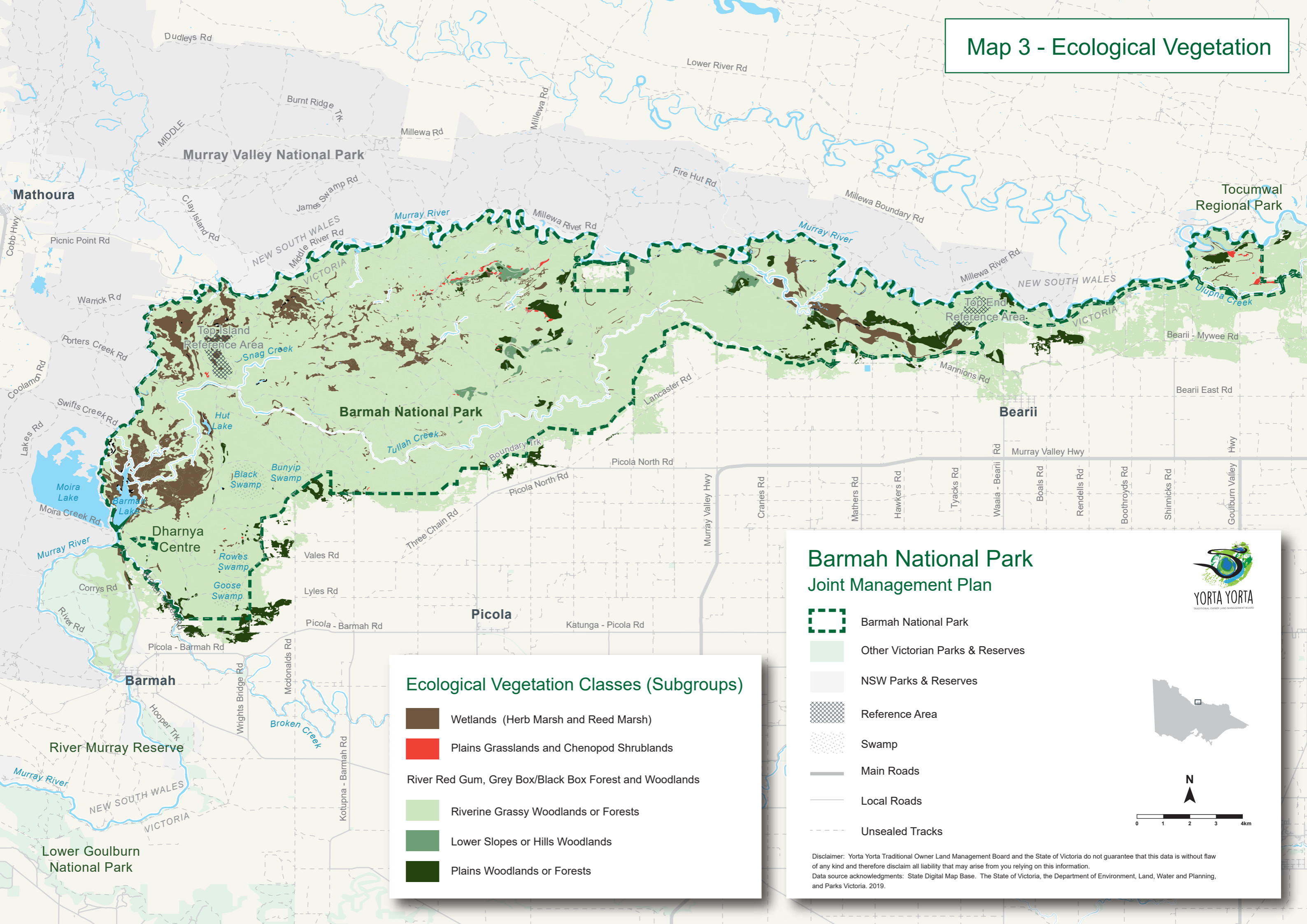


Map 3 - Ecological Vegetation

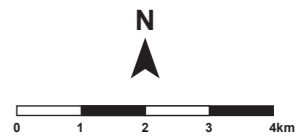


Ecological Vegetation Classes (Subgroups)

- Wetlands (Herb Marsh and Reed Marsh)
- Plains Grasslands and Chenopod Shrublands
- River Red Gum, Grey Box/Black Box Forest and Woodlands
- Riverine Grassy Woodlands or Forests
- Lower Slopes or Hills Woodlands
- Plains Woodlands or Forests

**Barmah National Park
Joint Management Plan**

- Barmah National Park
- Other Victorian Parks & Reserves
- NSW Parks & Reserves
- Reference Area
- Swamp
- Main Roads
- Local Roads
- Unsealed Tracks



Disclaimer: Yorta Yorta Traditional Owner Land Management Board and the State of Victoria do not guarantee that this data is without flaw of any kind and therefore disclaim all liability that may arise from you relying on this information.
Data source acknowledgments: State Digital Map Base. The State of Victoria, the Department of Environment, Land, Water and Planning, and Parks Victoria. 2019.